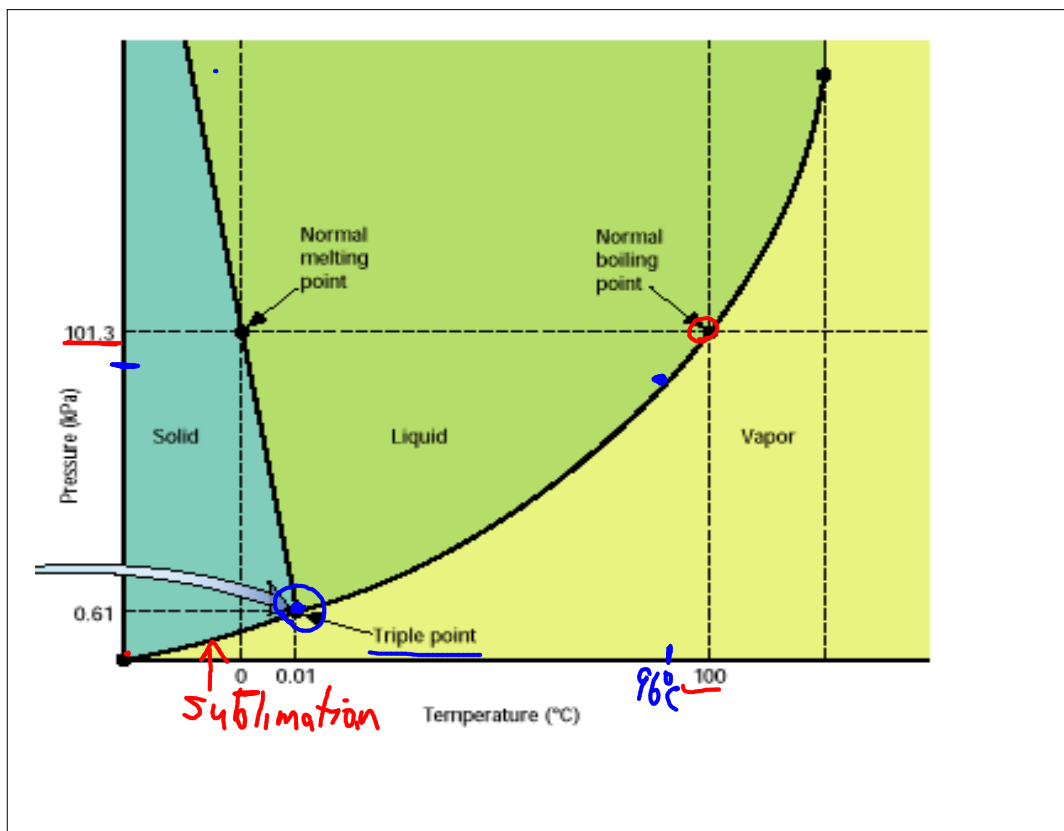


Ch 13 HW: Sec Asses 21-25 Rev Con 48,49,92,95  
Sec 13.4  
obj: Interpret a phase diagram for a substance.

## Phase Diagram

- A graph that shows how pressure and temp. affects the melting + boiling pt of a substance.
- \* It indicates the pressures and temperatures where solids, liquids and gases exist @ equilibrium.

1/13/2003 7:49 AM



Jan 14 - 7:56 AM

- Triple point - The pressure and temp where a substance exists as a solid, liquid & gas @ equilibrium.
- Phase diagrams are unique to the substance. (Physical Properties)
- Some substances do not change from a solid to a liquid.
  - \* They change directly from a solid to a gas.
  - \* This process is called sublimation.

Jan 14 - 11:11 AM

\* Sublimation - The phase change from a solid to a gas w/o going through the liquid phase.

\* Examples: Dry Ice (Solid  $\text{CO}_2$ )  
Iodine ( $\text{I}_2$ )

Jan 14 - 11:19 AM